



FRI™

Design by Jaime Hayon, 2015

REPUBLIC OF **Fritz Hansen®**

EST. 1872

# FRI™

DESIGN BY JAIME HAYON, 2015

Fri™ easy chair comes fully upholstered in a collection of unique Designer Selections colours. The shell of the chair is created in hard polyurethane foam with glass fibre re-enforcement of the edges. The seat cushion is made of moulded polyurethane foam and the back cushion is made of two slices of soft foam.

The base consist of 4 legs in brushed aluminium. Additionally, a wooden base in oak can be selected for the chair.

Fri is also available in a wide range of standard fabrics and leathers.

A matching foot stool is available for the chair.



## FRI™ DESIGNER SELECTION



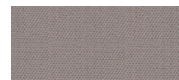
**GREY**

FABRIC: SUNNIVA 242



**BLUE**

FABRIC: SUNNIVA 192



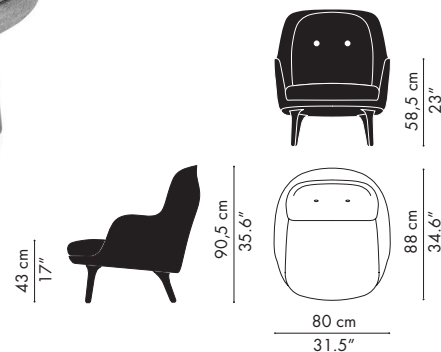
**LIGHT PINK**

FABRIC: SUNNIVA 143



**DARK GREEN**

FABRIC: BALDER 982



FRITZHANSEN.COM